

# Penn Valley Constructors, Inc.



Gelest's Office-Warehouse is a pre-engineered building featuring Dryvit, metal siding, rockface and painted block. Vapor detection and emergency ventilation are included to meet the requirements of NFPA 69.



< Interior corridor within the manufacturing building provides access to multi-level production cells, first floor temperature control units, makeup air systems, process utility piping as well as raw material and finish product movement.



< Mechanical room in manufacturing building which houses the nitrogen generator, nitrogen storage tanks, feed air compressor, dryer for the nitrogen generator, cooling tower and tanks, chiller units and water heaters.



The manufacturing building is an H-3 occupancy constructed with reinforced concrete designed to meet the damage limiting requirements of NFPA 68.



Reinforcing steel bars with an epoxy coating are used to provide "DLC".

## GELEST INC.

Barry Arkles, Kevin King, Jack Platt - Owners

USX Industrial Park

49,500 Square Feet

Manufacturing, Warehouse, Office

Steven C. Tiberio, Architect

Completed 2002

*"Partners in Excellence"*

# *Penn Valley Constructors, Inc.*



## **GELEST, INC.**

Barry Arkles, Kevin King, Jack Platt - Owners

New Ford Mill Industrial Park

23,801 Square Feet

Office, Manufacturing, Maintenance & Storage

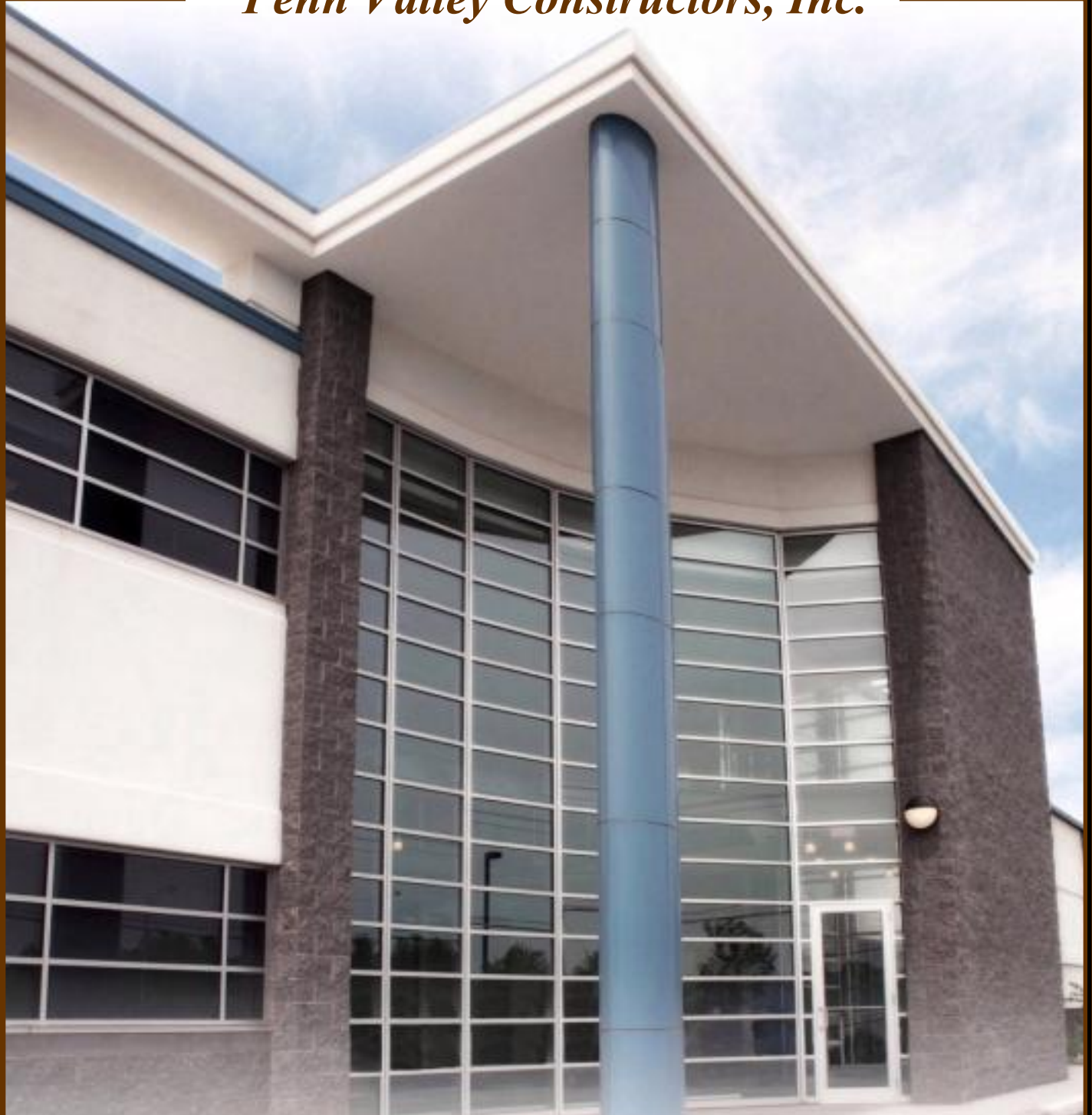
Steven C. Tiberio, Architect

Completed 2007

*"Partners in Excellence"*



# *Penn Valley Constructors, Inc.*



## **GELEST, INC.**

Barry Arkles, Kevin King, Jack Platt - Owners

New Ford Mill Industrial Park

23,801 Square Feet

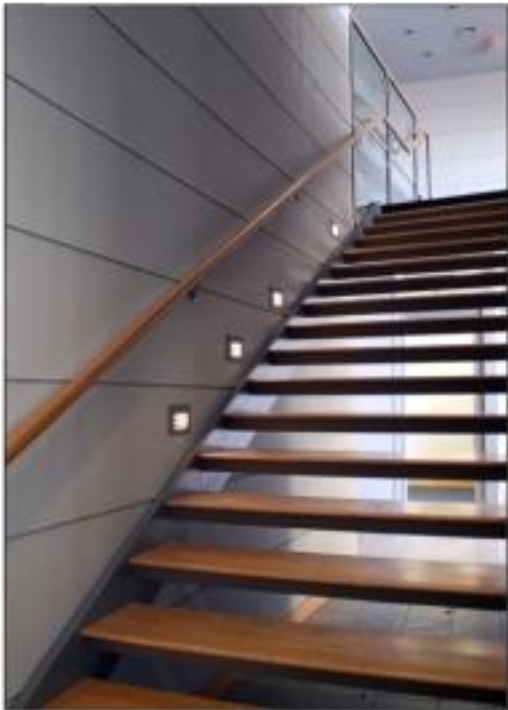
Office, Manufacturing, Maintenance & Storage

Steven C. Tiberio, Architect

Completed 2007

*"Partners in Excellence"*

# *Penn Valley Constructors, Inc.*



## **GELEST, INC.**

Barry Arkles, Kevin King, Jack Platt - Owners

New Ford Mill Industrial Park

23,801 Square Feet

Office, Manufacturing, Maintenance & Storage

Steven C. Tiberio, Architect

Completed 2007

*"Partners in Excellence"*